

LP GAS: Prevent accidents

Remember...

LP gas is very important in our everyday lives. Accidents can be prevented: check gas installation, cylinders, and tanks. The latter must receive periodic maintenance, be painted to avoid corrosion, and have old valves changed for new ones

Be safe, don't accept cylinders when they show:



- Leak
- Valve damage
- Corrosion
- Non-professional repairs (welding)
- A deformed or corroded bottom
- No valve protection collar
- Broken handle (to close/open valve) or there is no handle

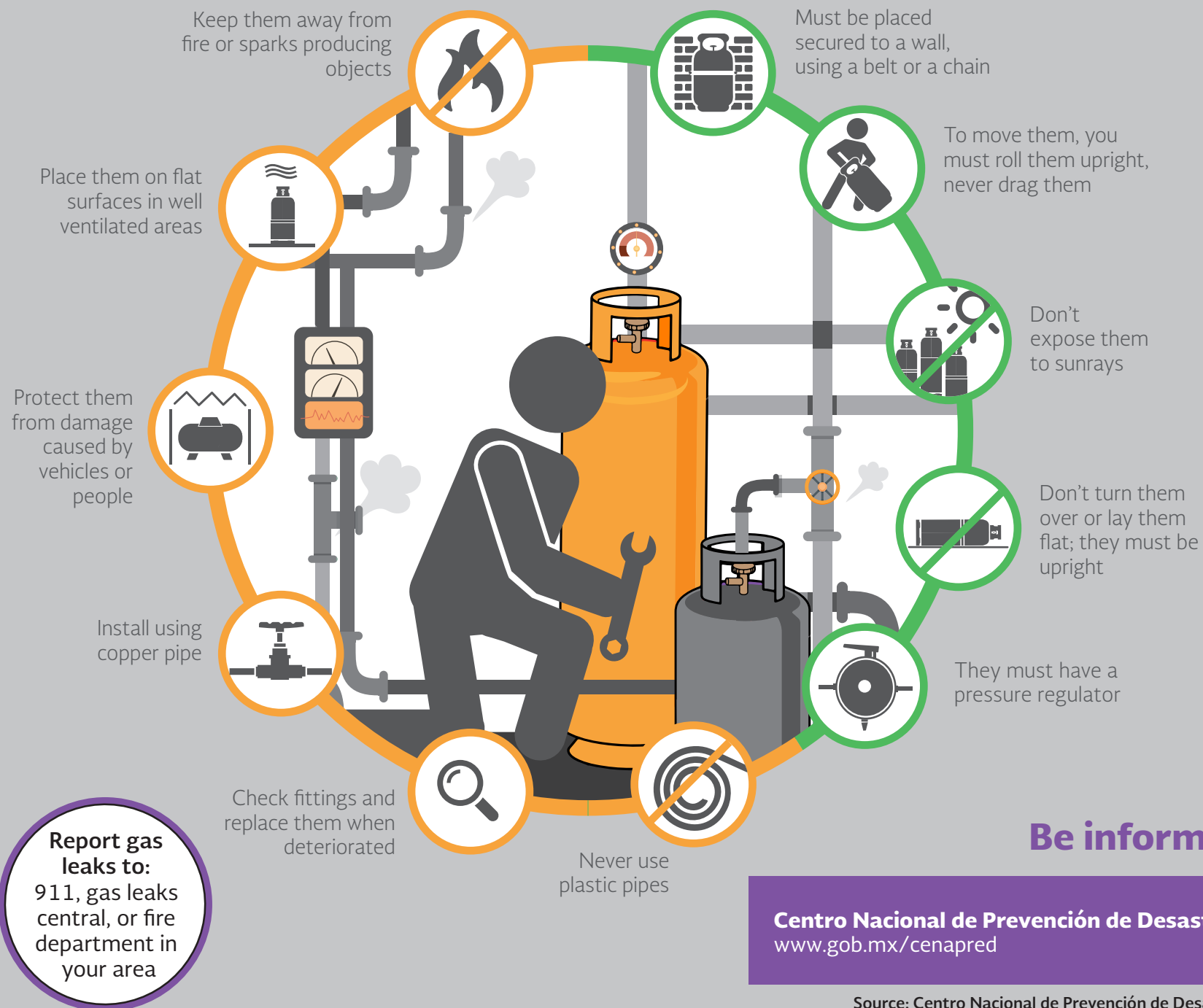
Cylinder fill-up

Must take place at the distribution plant. Current standards prohibit filling-up at an LP gas supply station or at a street distribution car tank. This is dangerous because there are no controls and no safety conditions:



- There may be leaks and deadly accidents
- When overfilling occurs, gas is expelled without control
- Gas cylinders undergo no good condition checks, since they are not checked at the distribution plant

Safe handling for Cylinders and tanks



GOBIERNO DE
MÉXICO

SEGURIDAD
SECRETARÍA DE SEGURIDAD
Y PROTECCIÓN CIUDADANA



CNPC
COORDINACIÓN NACIONAL
DE PROTECCIÓN CIVIL



CENAPRED
CENTRO NACIONAL DE PREVENCIÓN
DE DESASTRES



gob.mx/cenapred

Source: Centro Nacional de Prevención de Desastres
Translation: Guadalupe Meléndez de Escalante



Handling LP gas

A serious matter

Cylinders used at fixed and semi-fixed locations on the Street, must:



Be fitted with metallic shield reinforced hoses



Be fitted with a pressure regulator



Have an additional quick shut-off valve, besides the one in the cylinder



Have only one with a maximum capacity of 20 kilograms

Please also remember

1 to keep it at least 1.5 m away from fire, sparks, or heat sources

2 use appropriate tools to keep fittings in good condition

3 keep a dry chemical powder fire extinguisher with at list 4.5 kg, that works properly and has easy access

LP gas accidents in Mexico (2010-2016)



283
Transportation
46.85 %



261
Urban
43.21 %



60
Industrial
9.93 %

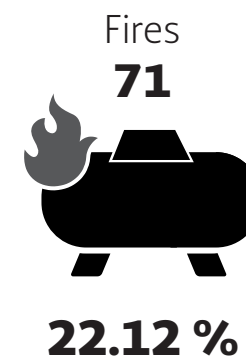
604
accidents

Reasons for LP gas urban accidents



1. Home and business accidents reported, with no additional information
2. Includes accidents during a distribution tank vehicle supplies

Industrial and urban accidents-type of event



Total accidents **321**