

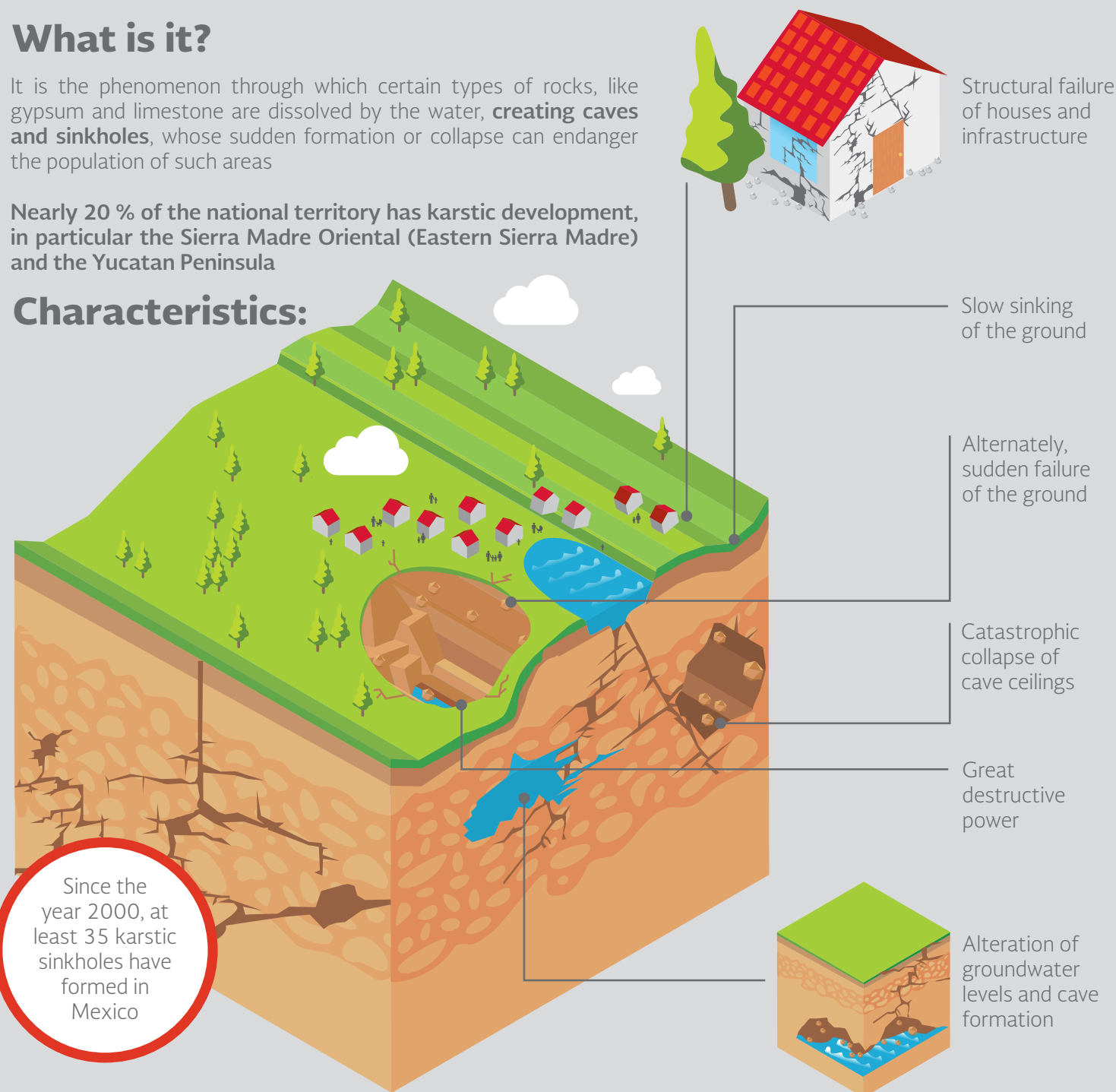
KARST: Sudden sinkhole collapse

What is it?

It is the phenomenon through which certain types of rocks, like gypsum and limestone are dissolved by the water, **creating caves and sinkholes**, whose sudden formation or collapse can endanger the population of such areas

Nearly 20 % of the national territory has karstic development, in particular the Sierra Madre Oriental (Eastern Sierra Madre) and the Yucatan Peninsula

Characteristics:



Preventive measures:



Avoid discharging effluents into sinkholes or cracked ground



If you detect deformation in houses structures, appearance of cracks, new accumulations of water, etc., get in contact with the Civil Protection authorities in your locality



In case of a slow sinking, evacuate the affected area and define a security perimeter



Before building respect the land use and perform adequate studies to verify the suitability of the locale



Avoid water flow towards the affected area

Learn more

National Center for Disasters Prevention
www.gob.mx/cenapred

Source: National Center for Disasters Prevention



**GOBIERNO DE
MÉXICO**

SEGURIDAD
SECRETARÍA DE SEGURIDAD
Y PROTECCIÓN CIUDADANA



CNPC
COORDINACIÓN NACIONAL
DE PROTECCIÓN CIVIL



CENAPRED
CENTRO NACIONAL DE PREVENCIÓN
DE DESASTRES



gob.mx/cenapred



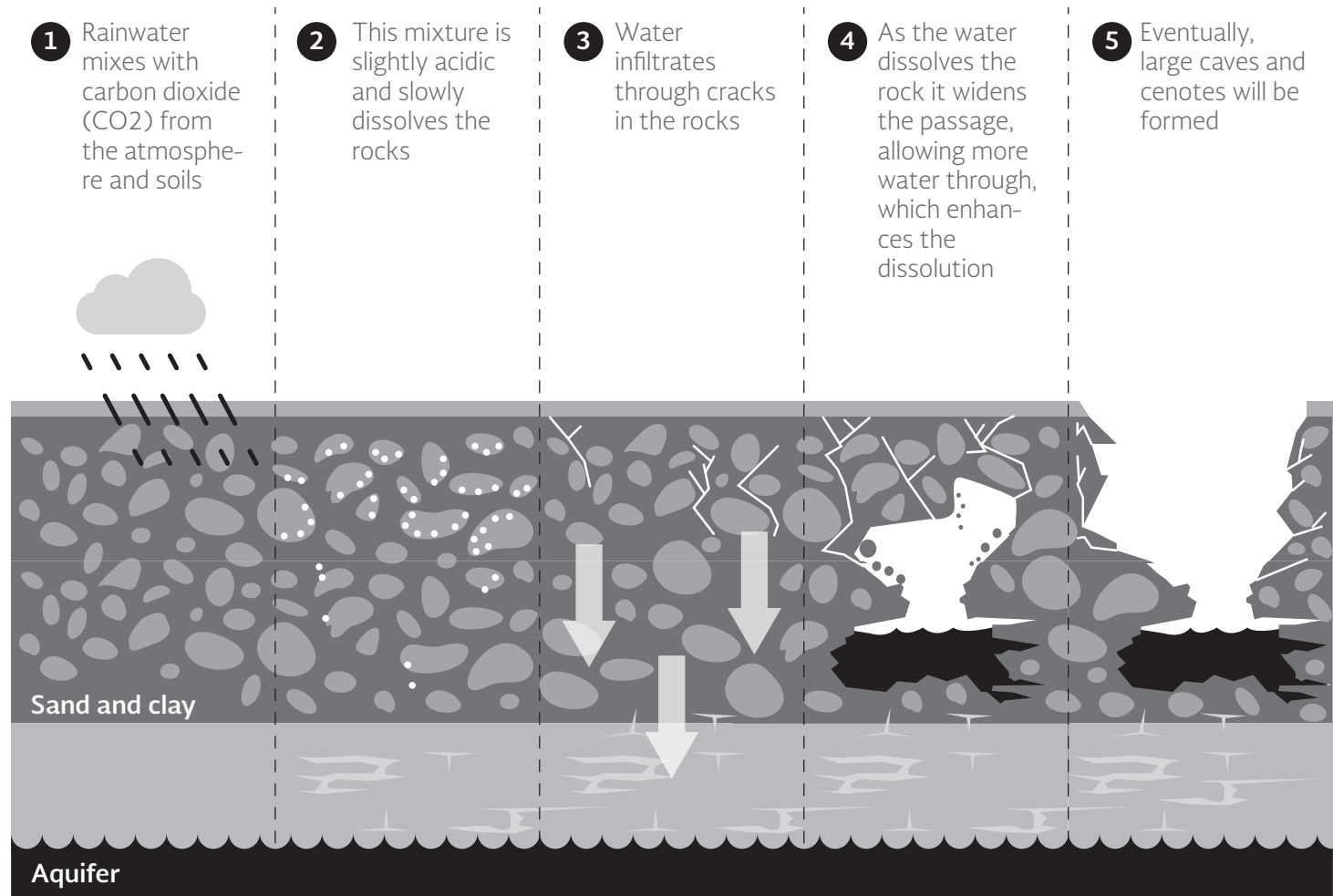
Karst

Collapses of caves, sinkholes and gorges which can be sudden

How do caves and sinkholes form?

The limestone rocks that form the Sierra Madre Oriental, part of the Sierra Madre del Sur, the Sierras de Chiapas and the Yucatan Peninsula, were formed more than 65 million years ago through the accumulation of shells of microscopic sea animals at the bottom of the sea

The weight of the overlying layers compacted and recrystallized the sediments, turning them into rocks, which afterwards were deformed and fractured into the present mountains or, in the case of the Yucatan Peninsula, as a plateau



Caves of Mexico

The longest cave is in the state of Quintana Roo, it has

311

km of tunnels and is considered the second longest in the world

There are more than

30

caves with over 10 km in length, and more than 200 over 1.5 km

The deepest cave in Mexico reaches

1,545

meters below its entrance. It is in the state of Oaxaca and is the eight deepest in the world

There are more than

320

caves over 200 m deep